

NJP402 Series

Features

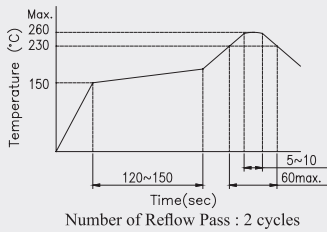
- 3.5 φ
- CTIA / OMTP Compliance



NEW

Rating	DC12V 1A max.
Contact Resistance	100mΩ max.
Insulation Resistance	DC500V -100MΩ min.
Withstand Voltage	AC500V - 1 minute
Insertion Force	0.4 ~ 2.0 Kgf
Extraction Force	0.3 ~ 1.5 Kgf

Recommended Reflow Soldering Profile



Recommended Manual Soldering Profile

	Temperature	Time
Manual Soldering Temperature	350 °C (max.)	3 Sec.(max.)

The solder iron and solder shall be applied at a distance of 1.91 mm to 2.54 mm from the plastic housing.

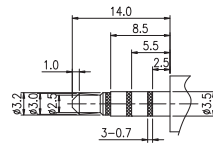
Durability	5,000 cycles
------------	--------------

SMT - D Type

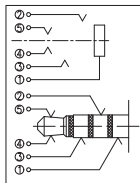
12.5L x 7.3W x 4.15H

Product No.	Package
NJP402-100T	850 Pcs/Reel

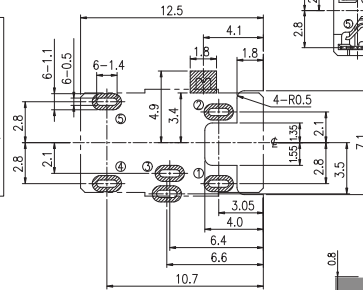
Applicable Plug



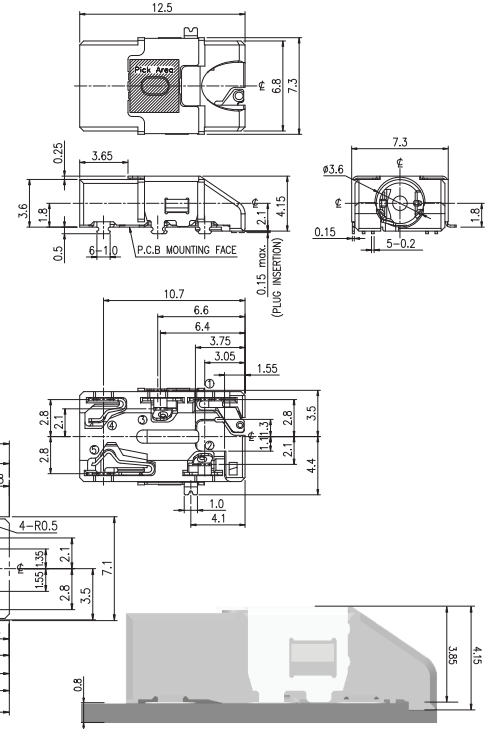
Schematic



P.C.B Layout



Outline Drawing



General Tolerance : ±0.2mm.